



19, Gr.Floor,Shanta Industrial Premises Co-op Society Ltd, I.BPatel Road, Goregaon (East) Mumbai - 400063

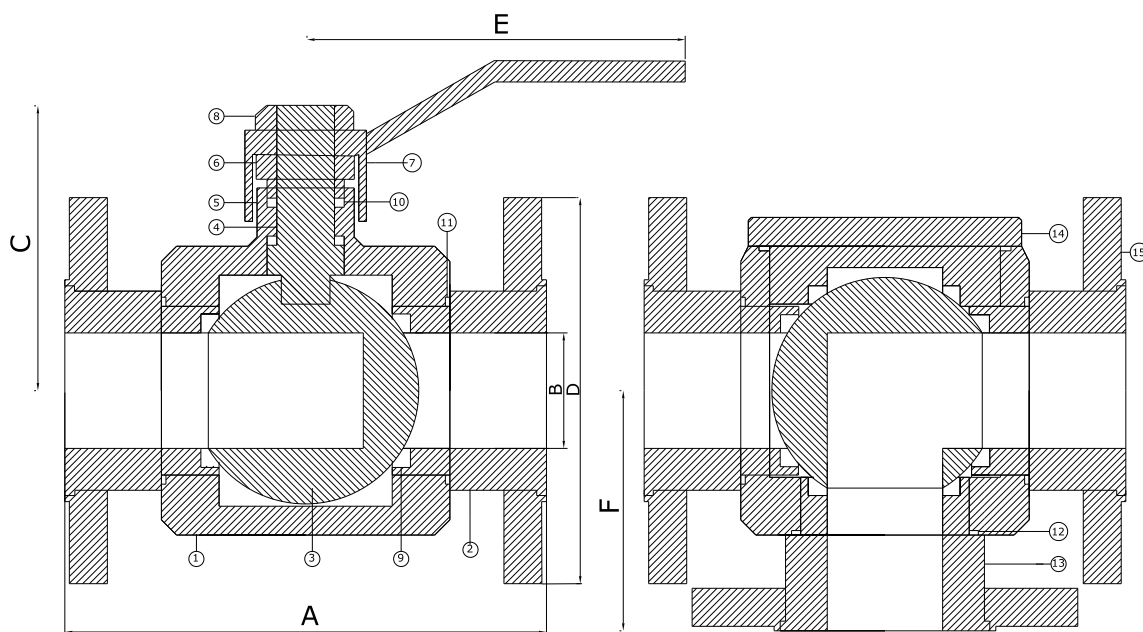
Tel : 022-26858793 • Cell : 09821271748 • Telefax : 022-26852558

## THREE WAY BALL VALVE

Sr. No.	NAME OF PARTS	MATERIAL
1	BODY	A.I.S.I 304 / 316 / M.S.
2	ADAPTOR	A.I.S.I 304 / 316 / M.S.
3	BALL	A.I.S.I 304 / 316
4	SPINDLE	A.I.S.I 304 / 316
5	BONNET	A.I.S.I. 304 / 316 / M.S.
6	GLANDNUT	A.I.S.I 304 / 316 / M.S.
7	HANDLE	S.S. / M.S.

Sr. No.	NAME OF PARTS	MATERIAL
8	NUT	A.I.S.I. 304 / 316 / M.S.
9	SEAT	P.T.F.E.
10	SEAL	P.T.F.E.
11	BODY SEAL	P.T.F.E.
12	SIDE ADAPTOR SEAL	P.T.F.E.
13	SIDE ADAPTOR	A.I.S.I. 304 / 316 / M.S.
14	BOOSH	A.I.S.I. / 316 / M.S.
15	LOOSE FLANGE	A.I.S.I. 304 / 316 / M.S.

### Flange End Connection



TOP VIEW

SIZE	A	B	C	D	E	F
15(N.B.)	115	12	54	89(1/2"A.S.A.-150)	120	60
20(N.B.)	127	19	57	98(3/4"A.S.A.-150)	120	65
25(N.B.)	130	25	79	108(1"A.S.A.-150)	180	65
32(N.B.)	150	32	90	117(11/4"A.S.A.-150)	200	76
40(N.B.)	159	38	94	127(11/2"A.S.A.-150)	212	79
50(N.B.)	235	50	103	152(2"A.S.A.-150)	230	103
65(N.B.)	240	63	146	178(21/2"A.S.A.-150)	330	186

For 3", 4", 5" & 6" contact at : valves@ambikavalves.com