



19, Gr.Floor,Shanta Industrial Premises Co-op Society Ltd, I.BPatel Road, Goregaon (East) Mumbai - 400063

Tel : 022-26858793 • Cell : 09821271748 • Telefax : 022-26852558

## ACTUATOR OPERATED BALL VALVE FLANGED END

### Salient Features and Specialities:

- ✦ Positive shut off
- ✦ Longer life
- ✦ Quick in action
- ✦ No lubrication
- ✦ Visual on / off indication
- ✦ Compact design
- ✦ Corrosion resistant
- ✦ Low pressure drop
- ✦ Simplicity
- ✦ Designs available in one piece / two piece / three piece
- ✦ Available in both regular port & full port patterns

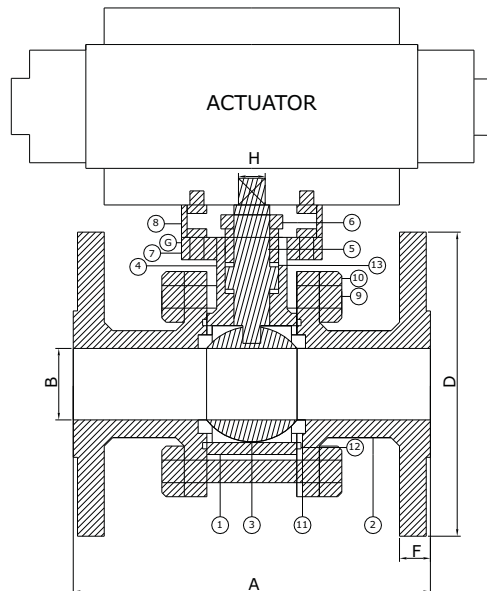


**Size range**

: 1/2" to 6"

**End Connections**

: Screwed / Socket weld  
Butt weld / Flanged / TC



Sr. No.	NAME OF PARTS	MATERIAL
1	BODY	A.I.S.I 304 / 316 / WCB
2	ADAPTOR	A.I.S.I 304 / 316 / WCB
3	BALL	A.I.S.I 304 / 316
4	SPINDLE	A.I.S.I 304 / 316
5	BONNET	A.I.S.I. 304 / 316 / WCB
6	GLANDNUT	A.I.S.I 304 / 316 / M.S.
7	ACTUATOR MOUNTING PATA	A.I.S.I.304 / M.S.
8	ACTUATOR FITTING STAND	A.I.S.I.304 / M.S.
9	HANDLE	A.I.S.I. 304 / M.S.
10	NUT	A.I.S.I. 304 / M.S.
11	SEAL	P.T.F.E.
12	BODY SEAL	P.T.F.E.
13	GLAND SEAL	P.T.F.E.

SIZE	A	B	C	D	E	F	G SQUARE PATA	H SQUARE SPINDLE
15 (N.B.)	108	12	68	89 1/2"(A.S.A.-150)	150	11	50	9.5
20 (N.B.)	118	19	68	98 3/4"(A.S.A.-150)	150	11	50	9.5
25 (N.B.)	127	25	68	108 1"(A.S.A.-150)	175	11	50	12
40 (N.B.)	165	38	82	127 1 1/2"(A.S.A.-150)	190	14	50	12
50 (N.B.)	178	50	90	152 2"(A.S.A.-150)	200	16	50	14
65 (N.B.)	191	63	108	178 2 1/2"(A.S.A.-150)	250	18	50	16
80 (N.B.)	203	76	132	190 3"(A.S.A.-150)	280	18	50	19
100 (N.B.)	229	100	155	229 4"(A.S.A.-150)	350	22	50	19
150 (N.B.)	267	150	225	279 6"(A.S.A.-150)	450	25	80	32